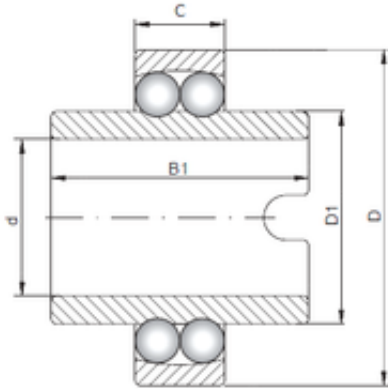




# Timken BEARINGS INDUSTRY

## ISO 11306 self aligning ball bearings



Bearing No. 11306

Size	30x72x19 mm
Bore Diameter	30 mm
Outer Diameter	72 mm
Width	19 mm
d	30 mm
D	72 mm
B1	52 mm
C	19 mm
D1	45 mm

11306 Bearing 2D drawings and 3D CAD models